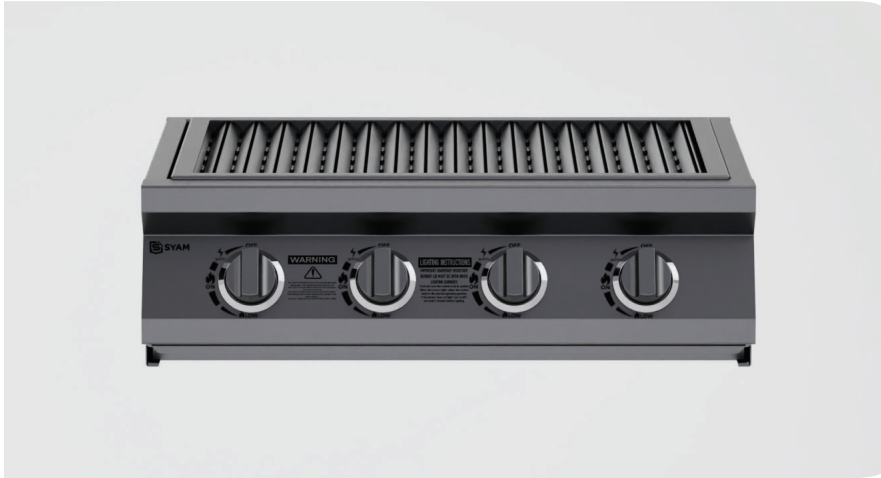


Comfort 4 (A) Gas Insert Stainless Braai | Bbq



Material:	Finish:	Product Weight:
304 Stainless Steel (Standard) 430 Stainless Steel (Optional) 316 Stainless Steel (Optional)	No. 4 Brushed Finish	28.6 kg

Burner Configuration:	Burner Consumption: (per burner)
Main: 4 x I-Shape	LPG = 0.233 kg/h NG = 11.65 MJ/h

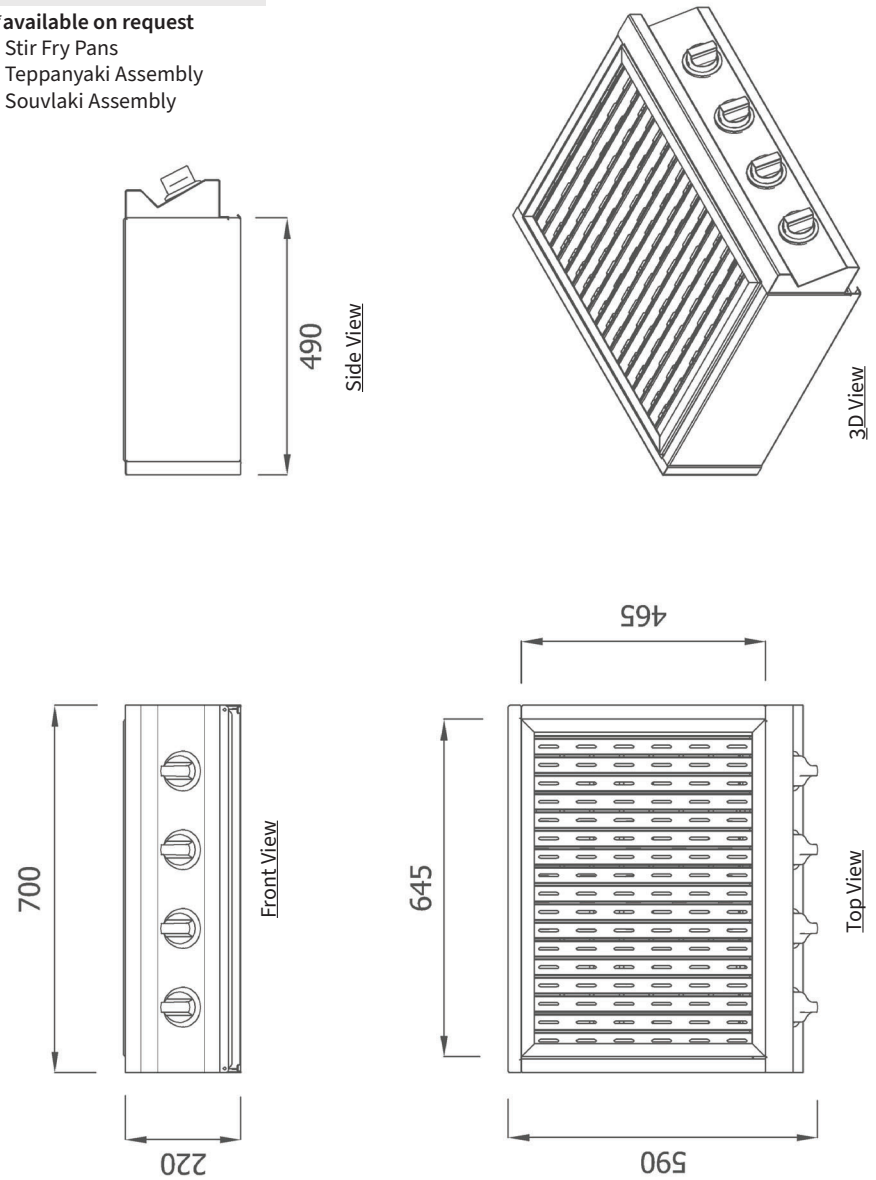
Dimensions:	L	H	D
Overall	700	220	590
Grilling Area	645	x	465

- * Features:**
- Stainless V-Style Grills
 - Die-Cast Alloy Knobs
 - Fully Removable Drip Tray
 - Stainless Flame Tamers
 - Gas Pressure: LPG - 2.8 kPa | NG - 2.0 kPa
 - Piezo Ignition On Each Burner
 - LPG(Standard) / NG* Compatible: *For NG a conversion kit is required

Optional Braai Accessories:

- *available on request
- Stir Fry Pans
- Teppanyaki Assembly
- Souvlaki Assembly

Product Views & Dimensions:



IMPORTANT NOTICE: Before using your stainless appliance, remove all the PVC surface protection film and thoroughly clean all surfaces to remove the any adhesive left behind on the metal surface. Failure to do so may result in surface contamination & oxidation (rust) caused by atmospheric chlorides and/or other elements. Use hot soapy water which does not contain any ammonia, chlorides or chemicals. For safe operation of this appliance it is essential that the operator read the and follow the contents of the **OWNER'S MANUAL**. For details on the **OWNER'S MANUAL** please scan the **QR Code** found on your appliance.

